

Bansbach
easylift



**BANSBACH
QUICK SHIP**

QUICK SHIP 3/10



SIZE 3/10

EXTENSION FORCE: 10 - 100N

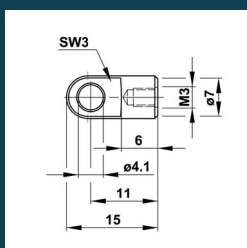
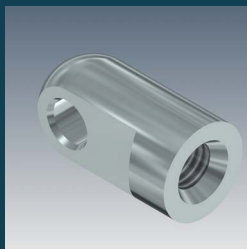
Stroke	Extended length (EL2)	Part number	Force (N)
20	72	QS-10-020	In case of an order, it is essential to mention
30	92	QS-10-030	
40	112	QS-10-040	
50	132	QS-10-050	
60	152	QS-10-060	
80	192	QS-10-080	

TEKNISK INFORMATION:

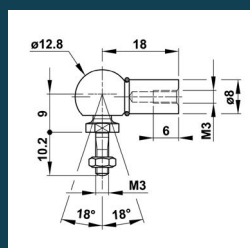
- Ej lagervara
- Önskad kraft anges vid beställning
- Fästen enligt nedan beställs vid behov
- Material:
 - Kolvstång: CeramPro beläggning
 - Cylinder: Pulverlackat stål
- Normal hastighet och normal sluddämpning
- Teknisk information finns i Bansbach huvudkatalog

OPTIONAL CONNECTING PARTS

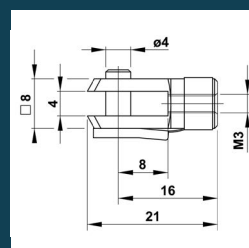
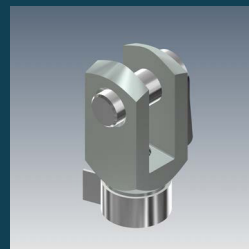
HINGE EYE
Q1



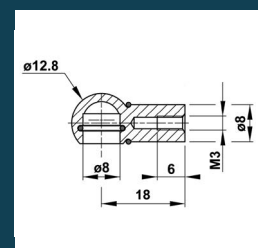
ELBOW JOINT
Q3



CLEVIS
Q4



BALL SOCKET
Q6





SIZE 4/12

EXTENSION FORCE: 10 - 180N

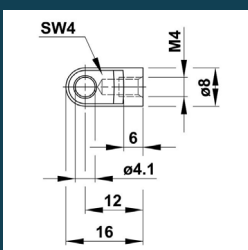
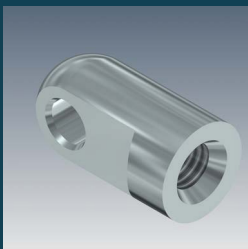
TEKNISK INFORMATION:

- Ej lagervara
- Önskad kraft anges vid beställning
- Gasfjädern har ventil för påfyllning
- Fästen enligt nedan beställs vid behov
- Material:
Kolvstäng: CeramPro beläggning
Cylinder: Pulverlackat stål
- Normal hastighet och slutdämpning
- Teknisk information finns i Bansbach huvudkatalog

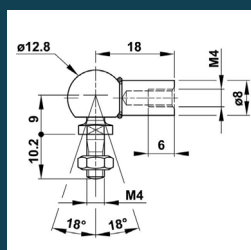
Stroke	Extended length (EL2)	Part number	Force (N)
20	72	QS-10-020	10 - 180 N
30	92	QS-10-030	In case of an order, it is essential to mention
40	112	QS-10-040	
50	132	QS-10-050	
60	152	QS-10-060	
80	192	QS-10-080	
100	232	QS-12-100	
120	272	QS-12-120	
150	332	QS-12-150	

OPTIONAL CONNECTING PARTS

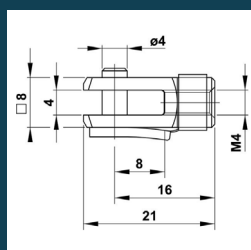
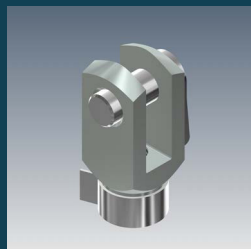
HINGE EYE
S1



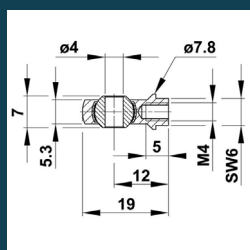
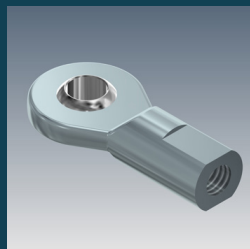
ELBOW JOINT
F4



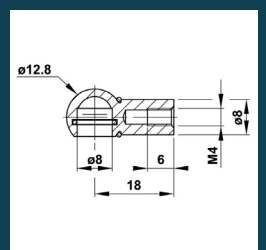
CLEVIS
N4



HINGE HEADS
R6



BALL SOCKET
F5



QUICK SHIP 6/15



SIZE 6/15

EXTENSION FORCE: 20 - 400N

Stroke	Extended length (EL2)	Part number	Abkati part number	Force (N)
20	67	QS-15-020		20 - 400 N In case of an order, it is essential to mention
40	107	QS-15-040		
50	127	QS-15-050		
60	147	QS-15-060		
80	187	QS-15-080	63-15080	
100	227	QS-15-100	63-15100	
120	267	QS-15-120		
150	327	QS-15-150	63-15150	
200	427	QS-15-200		

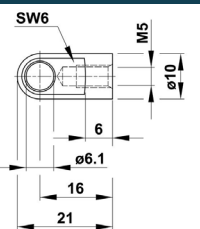
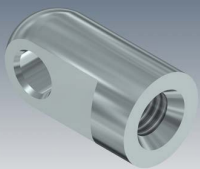
TEKNISK INFORMATION:

- Snabb leverans, gråmarkerade på lager
- (upp till 10st)
- Önskad kraft anges vid beställning
- Gasfjädern har ventil för påfyllning
- Fästen enligt nedan beställs vid behov
- Material:
 - Kolvstång: CeramPro beläggning
 - Cylinder: Pulverlackat stål
- Normal hastighet och sluddämpning
- Teknisk information finns i Bansbach huvudkatalog

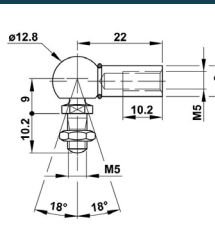
Artiklar på gråtonade fält finns på lager.

OPTIONAL CONNECTING PARTS

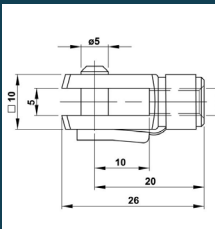
HINGE EYE
S2



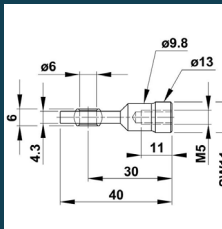
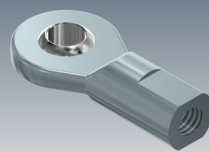
ELBOW JOINT
0408



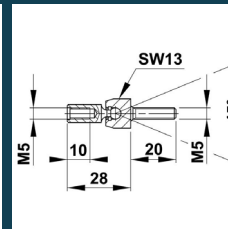
CLEVIS
0406, 0407



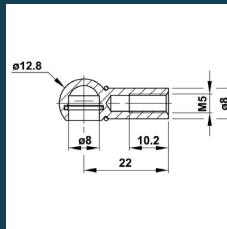
HINGE HEADS
R7



BALL JOINT
G6



BALL SOCKET
J3





SIZE 8/19

EXTENSION FORCE: 50 - 700N

TEKNISK INFORMATION:

- Snabb leverans, gråmarkerade på lager
- (upp till 10st)
- Önskad kraft anges vid beställning
- Gasfjäders har ventil för påfyllning
- Fästen enligt nedan beställs vid behov
- Material:
 - Kolvstång: CeramPro beläggning
 - Cylinder: Pulverlackat stål
- Långsam hastighet och kraftig sluddämpning
- Teknisk information finns i Bansbach huvudkatalog

Stroke	Extended length (EL2)	Part number	Abkati part number	Force (N)
50	164	QS-19-050		50 - 700 N
100	264	QS-19-100	63-19100	In case of an order, it is essential to mention
150	364	QS-19-150	63-19150	
200	464	QS-19-200	63-19200	
250	564	QS-19-250		
300	664	QS-19-300		

Artiklar på gråtonade fält finns på lager.

HINGE EYE
0401

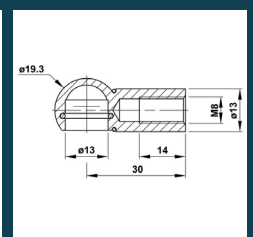
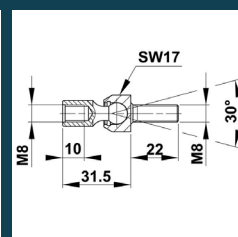
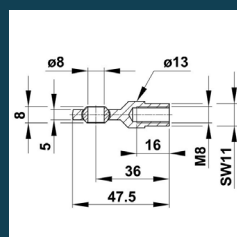
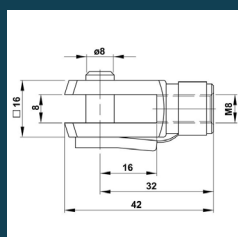
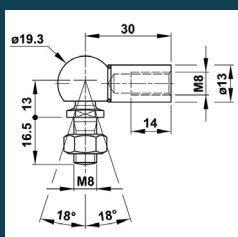
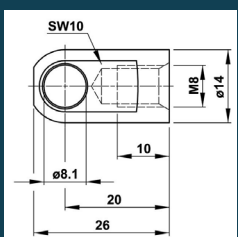
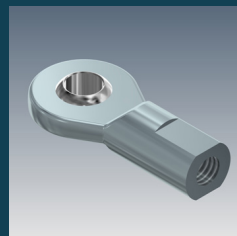
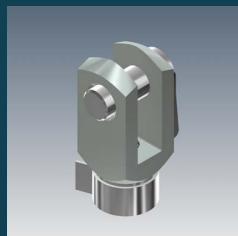
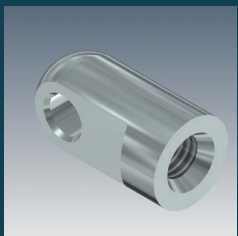
ELBOW JOINT
0391

CLEVIS
0393, 0395

HINGE HEADS
A7

BALL JOINT
B6

BALL SOCKET
P3



QUICK SHIP 10/22



SIZE 10/22

EXTENSION FORCE: 80 - 1300N

Stroke	Extended length (EL2)	Part number	Abkati part number	Force (N)
50	164	QS-22-050		80 - 1300 N In case of an order, it is essential to mention
100	264	QS-22-100	63-22100	
150	364	QS-22-150	63-22150	
200	464	QS-22-200	63-22200	
250	564	QS-22-250	63-22250	
300	664	QS-22-300	63-22300	
350	764	QS-22-350		
400	864	QS-22-400		
450	964	QS-22-450		
500	1064	QS-22-500	63-22500	
550	1164	QS-22-550		
600	1264	QS-22-600		
650	1364	QS-22-650		
700	1464	QS-22-700		

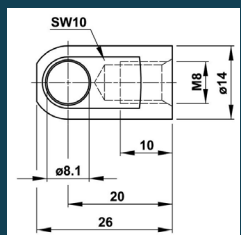
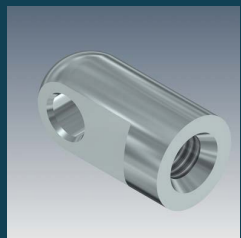
TEKNISK INFORMATION:

- Snabb leverans, gråmarkerade på lager
- (upp till 10st)
- Önskad kraft anges vid beställning
- Gasfjädern har ventil för påfyllning
- Fästen enligt nedan beställs vid behov
- Material:
 - Kolvstång: CeramPro beläggning
 - Cylinder: Pulverlackat stål
- Långsam hastighet och kraftig sluddämpning
- Teknisk information finns i Bansbach huvudkatalog

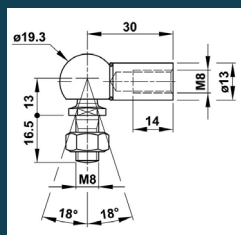
Artiklar på gråtonade fält finns på lager.

OPTIONAL CONNECTING PARTS

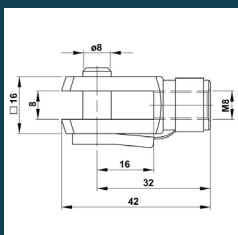
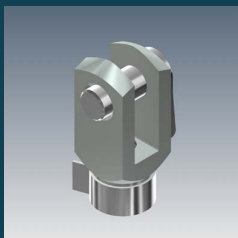
HINGE EYE
0401



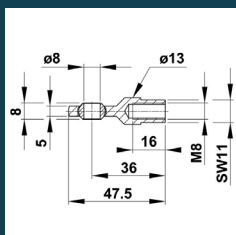
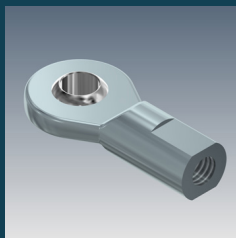
ELBOW JOINT
0391



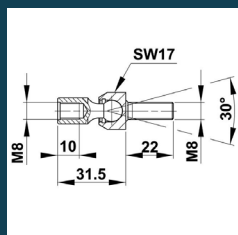
CLEVIS
0393, 0395



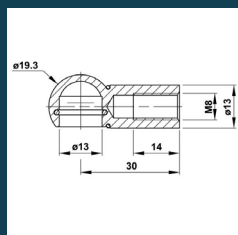
HINGE HEADS
A7



BALL JOINT
B6



BALL SOCKET
P3





SIZE 14/28

EXTENSION FORCE: 150 - 2500N

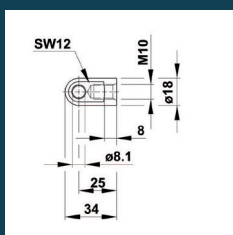
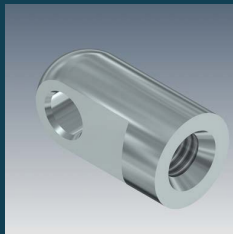
TEKNISK INFORMATION:

- Snabb leverans, gråmarkerade på lager (upp till 10st)
- Önskad kraft anges vid beställning
- Gasfjädern har ventil för påfyllning
- Fästen enligt nedan beställs vid behov
- Material:
 - Kolvstång: CeramPro beläggning
 - Cylinder: Pulverlackat stål
- Långsam hastighet och kraftigt sluddämpning
- Teknisk information finns i Bansbach huvudkatalog

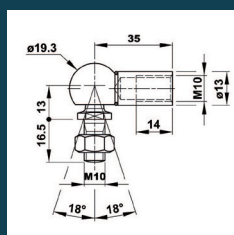
Stroke	Extended length (EL2)	Part number	Abkati part number	Force (N)
100	262	QS-28-100		150 - 2500 N
150	362	QS-28-150		In case of an order, it is essential to mention
200	462	QS-28-200		
250	562	QS-28-250	63-28250	
300	662	QS-28-300	63-28300	
350	762	QS-28-350		
400	862	QS-28-400		
450	962	QS-28-450		
500	1062	QS-28-500		
550	1162	QS-28-550		
600	1262	QS-28-600		
650	1362	QS-28-650		
700	1462	QS-28-700		
750	1562	QS-28-750		

Artiklar på gråtonade fält finns på lager.

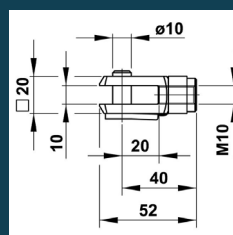
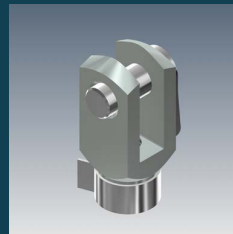
HINGE EYE
0390



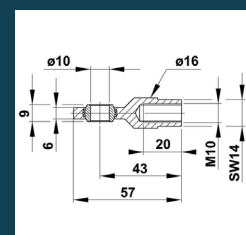
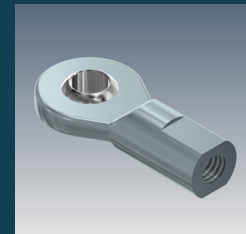
ELBOW JOINT
0392



CLEVIS
0394, 0396



HINGE HEAD
0397



QUICK SHIP 20/40



SIZE 20/40

EXTENSION FORCE: 500 - 5000N

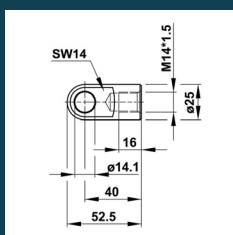
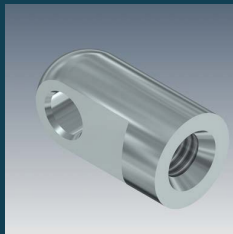
Stroke	Extended length (EL2)	Part number	Force (N)
100	317	QS-40-100	500 - 5000 N In case of an order, it is essential to mention
150	417	QS-40-150	
200	517	QS-40-200	
300	717	QS-40-300	
400	917	QS-40-400	
500	1117	QS-40-500	
600	1317	QS-40-600	
800	1717	QS-40-800	
1000	2117	QS-40-1000	

TEKNISK INFORMATION:

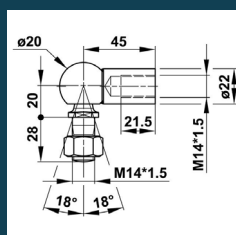
- Snabb leverans, gråmarkerade på lager (upp till 10st)
- Önskad kraft anges vid beställning
- Gasfjädern har ventil för påfyllning
- Fästen enligt nedan beställs vid behov
- Material:
 - Kolvstång: CeramPro beläggning
 - Cylinder: Pulverlackat stål
- Långsam hastighet och kraftig sluddämpning
- Teknisk information finns i Bansbach huvudkatalog

OPTIONAL CONNECTING PARTS

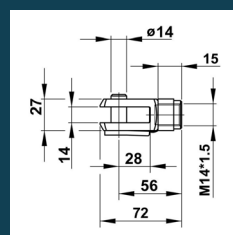
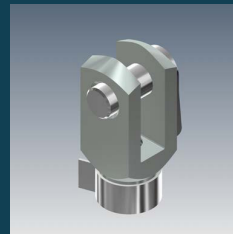
HINGE EYE
S5



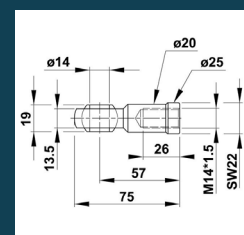
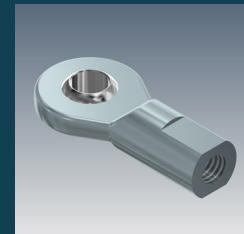
ELBOW JOINT
O400



CLEVIS
L5



HINGE HEAD
C8





SIZE 30/70

EXTENSION FORCE: 2000 - 13 000N

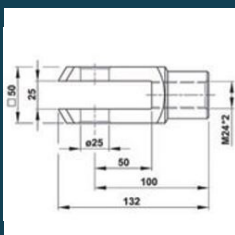
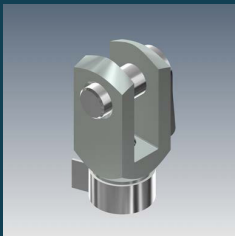
TEKNISK INFORMATION:

- Ej lagervara
- Önskad kraft anges vid beställning
- Gasfjäders har ventil för påfyllning
- Fästen enligt nedan beställs vid behov
- Material:
 - Kolvstång: CeramPro beläggning
 - Cylinder: Pulverlackat stål
- Normal hastighet och sluddämpning
- Teknisk information finns i Bansbach huvudkatalog

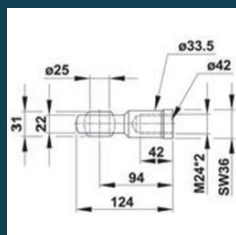
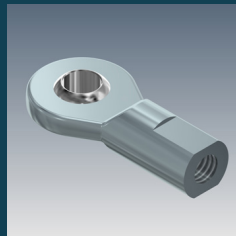
Stroke	Extended length (EL2)	Part number	Force (N)
100	320	QS-70-100	2000 - 13 000 N
200	520	QS-70-200	In case of an order, it is essential to mention
300	720	QS-70-300	
400	920	QS-70-400	
500	1120	QS-70-500	
600	1320	QS-70-600	
700	1520	QS-70-700	
800	1720	QS-70-800	

OPTIONAL CONNECTING PARTS

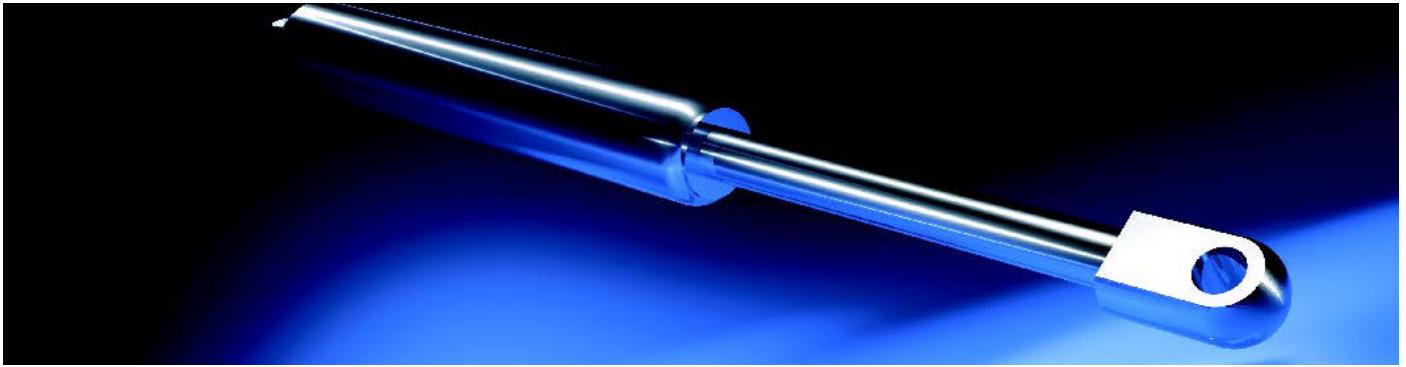
CLEVIS
M5



HINGE HEAD
M8



QUICK SHIP STAINLESS STEEL

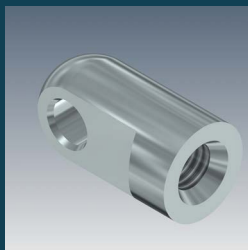


HIGH QUALITY STAINLESS STEEL (AISI NR. 316L) QUICKLY AVAILABLE, INCLUDING FDA OIL

- If the order is received by 12am, the shipment will generally be within 48 hours
- The extension force must be indicated on the order
- The Bansbach Quick Ship gas springs include a valve
- Connecting parts, if chosen, will be enclosed

Diameter Ø	Stroke (mm)	Extension Length (EL2)	Connecting Part	Order number	Extension Force F1 (N)
Ø 6/15	40	107	M5	QSN-15-040	10-400
	80	187		QSN-15-080	
	100	227		QSN-15-100	
	150	327		QSN-15-150	
Ø 8/19	50	164	M8	QSN-19-050	30-700
	100	264		QSN-19-100	
	150	364		QSN-19-150	
	200	464		QSN-19-200	
	250	564		QSN-19-250	
Ø 10/22	100	264	M8	QSN-22-100	50-1300
	150	364		QSN-22-150	
	200	464		QSN-22-200	
	300	664		QSN-22-300	
	500	1064		QSN-22-500	
Ø 14/28	100	262	M10	QSN-28-100	150-2600
	150	362		QSN-28-150	
	200	462		QSN-28-200	
	400	862		QSN-28-400	

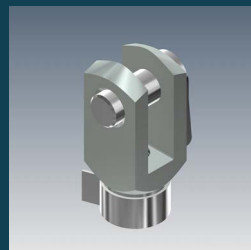
CONNECTING PARTS



QSN-15: D1
QSN-19: A1
QSN-22: A1
QSN-28: B1



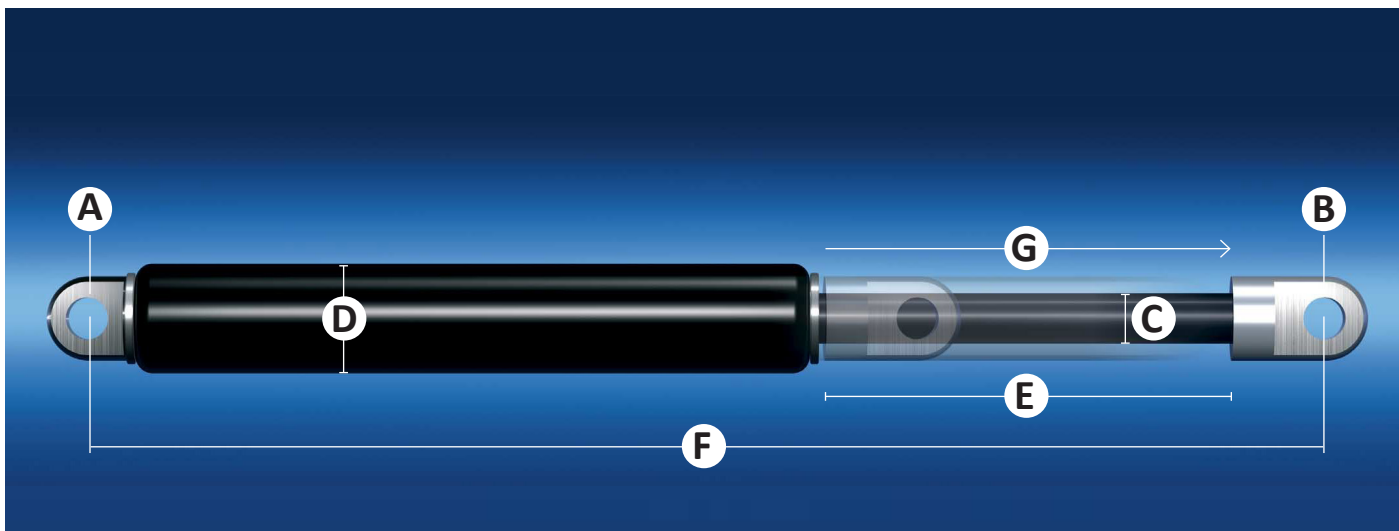
QSN-15: -
QSN-19: A5
QSN-22: A5
QSN-28: B9



QSN-15: -
QSN-19: A3
QSN-22: A3
QSN-28: A4



QSN-15: -
QSN-19: A7
QSN-22: A7
QSN-28: A8



- A** Beslag på cylindersidan
(t.ex. gänga, fästöra, vinkelkullänk, se sid 50-52 i Bansbachkatalogen)
- B** Beslag på kolvstång (-"-)
- C** Diameter cylinder
- D** Diameter kolvstång
- E** Slaglängd mm
- F** Inbyggnadsmått
Längd utskjuten. Vid gängor i båda ändar, mått mellan gängorna. Vid andra beslag C/c-mått)
- G** Kraft N

Andra önskemål

.....

.....

.....

.....

.....



Order telefon: 040-22 00 20 • Order mail: order@abkati.se
Postadress: PO Box 11, 232 21 Arlöv • Leveransadress: Starrvägen 11-13, 232 61 Arlöv
www.abkati.se